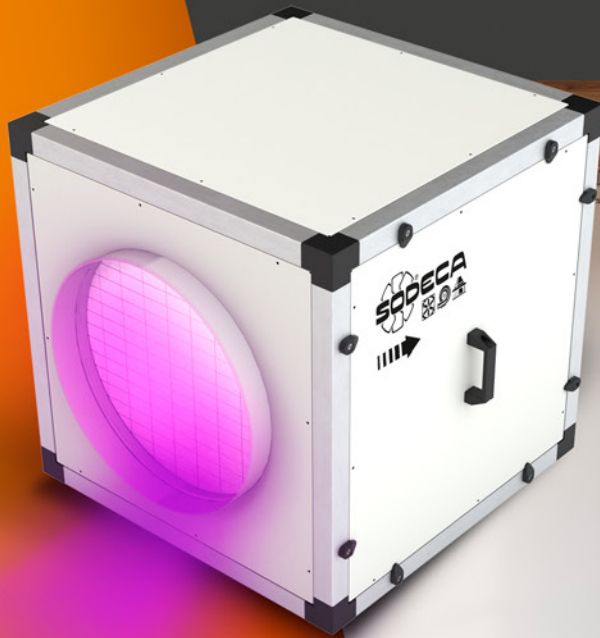




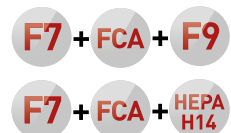
# CJK/FILTER/EC

AIR PURIFYING UNITS

- PURIFIES INDOOR AIR
- DIFFERENT STAGES OF FILTERING
- UVc GERMICIDAL CHAMBER
- IDEAL FOR RETAIL AND OTHER PREMISES
- EC MOTOR TECHNOLOGY WITH LOW POWER CONSUMPTION
- 25 MM ACOUSTIC CASING



FILTRATION  
STAGE



# CJK/FILTER/EC

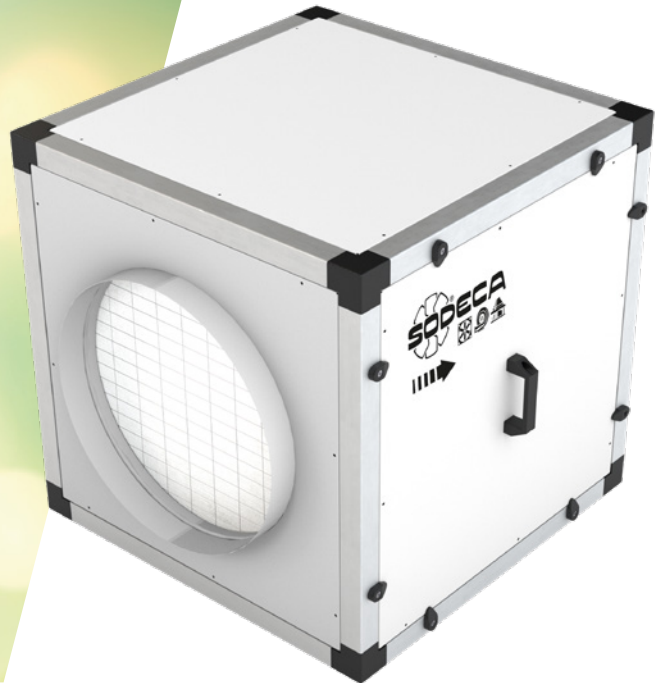
The CJK / FILTER / EC air purifying units have been designed for the movement, cleaning, odour removal and purification of air, **in high occupancy areas with high demands on soundproofing and versatility.**



## ENERGY SAVING

The air inlet aperture has been designed to aid laminar air flow which, together with a dynamic pressure balancing chamber, helps to optimise efficiency.

The High Performance EC Technology electrical motor, is a key factor for reducing electrical consumption. It is also easily regulated with any 0-10 V device.



## LOW SOUND LEVEL

The 25mm thick noise reducing outer panels use bespoke, high quality insulating materials and make this ideal equipment for installation in areas where a low noise level is required.



## DURABILITY

The outer panels of these units are made of pre-finished sheet metal with 40mm aluminium structural frames to maximise the life of the equipment, allowing it to be installed in outdoors corrosive areas. The installation of a rain cover is recommended to prevent entry of water.



## EASE OF INSTALLATION AND MAINTENANCE

The access door allows quick access to clean the impeller and replace filters.

**F**

**FILTRATION STAGES**

The units incorporate two stages of F7 + F9 or F7 + HEPA H14 filtration, depending on the model, as well as an activated carbon filter for the elimination of odours, giving a combination with excellent filtration performance.

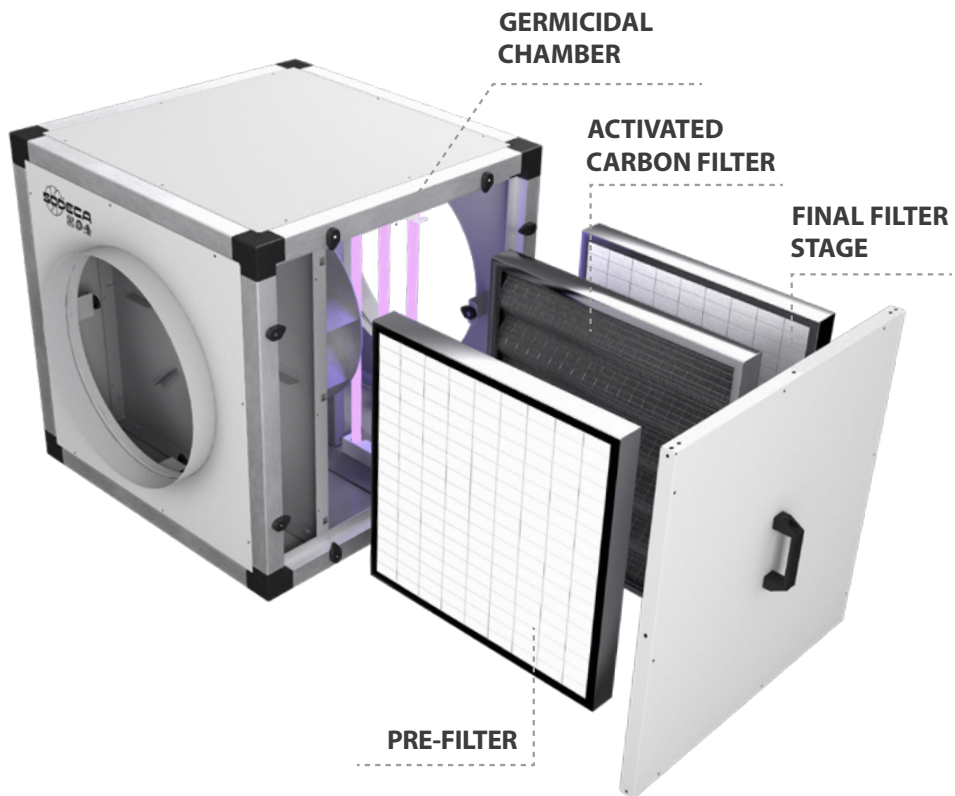
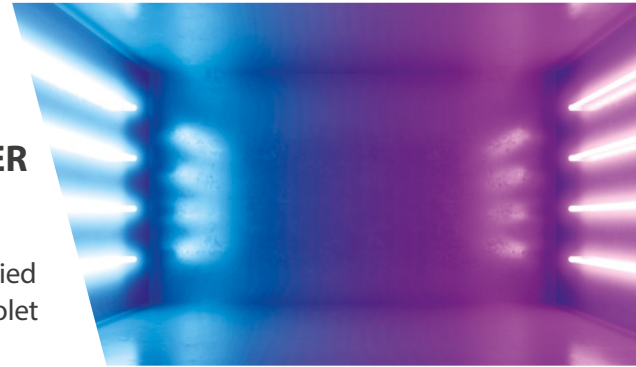


Filter replacement indicator

**CG**

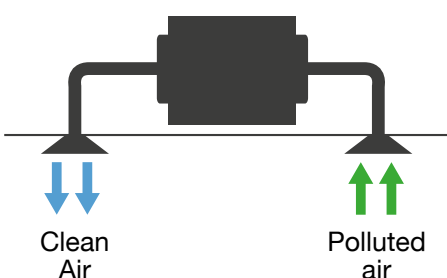
**GERMICIDAL CHAMBER**

Depending on model, these purification units can be supplied with an integrated UVc ultraviolet germicidal chamber.

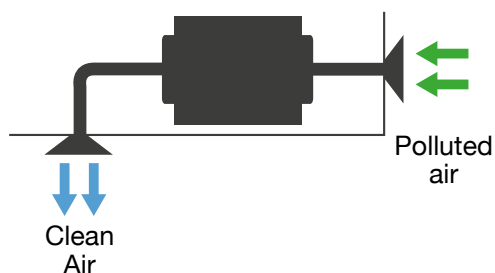


**EXAMPLE OF APPLICATION**

Indoor air purification

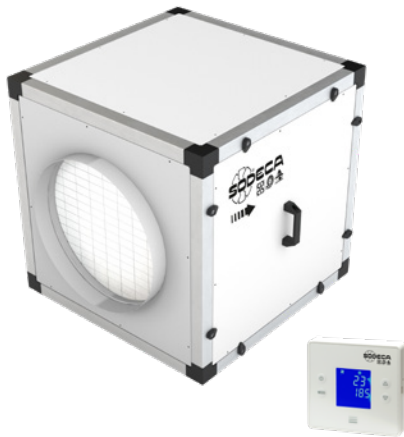
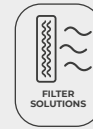


Capturing and purifying outdoor air



# CJK/FILTER/EC

Air purifying units for circular ducts, 25 mm acoustic casing, EC Technology motor



#### Characteristics:

- 40 mm aluminium profile structure.
- Covers with a high quality, 25 mm thick acoustic casing made of prefinished sheet.
- Backward curved impeller.
- Standardised inlet and outlet flanges allowing for easy installation in ducts.
- Filtration stages, depending on model:
  - F7 + F9.
  - F7 + HEPA H14.
- Active carbon filter for odour removal.
- Adjustable filter change alarm.
- Germicidal chamber with UVC ultraviolet lamps (256 nm), depending on model.
- Inspection cover for filter maintenance and replacement.
- Air inlet nozzle with diffusers that increase the efficiency of the fan.

#### Motor:

- High efficiency external rotor EC Technology motors, adjustable via 0-10 V signal.
- Single-phase 200-240 V 50/60 Hz and three-phase 380-480 V 50/60 Hz.
- Maximum temperature of air to be carried: -25 °C +60 °C.

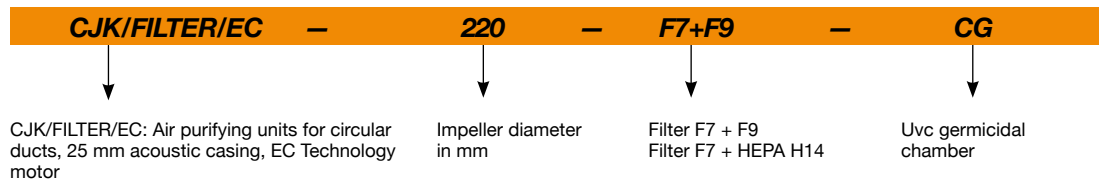
#### Finish:

- Aluminium profile and prefinished sheet steel structure with 25 mm thick thermal and acoustic insulation panels.

#### On request:

- Particle sensor for automatic control.

## Order code



## Filter characteristics

Filters	EN 779	EN 1822	ISO 16890			
	Em		ISO ePM <sub>1</sub>	ISO ePM <sub>2,5</sub>	ISO ePM <sub>10</sub>	ISO COARSE
F7	90%	-	>50%	>65-95%	>85%	-
F9	95%	-	>80%	>95%	>95%	-
HEPA H14	-	>99.995%	-	-	-	-

## Technical characteristics

Model	Recommended effective working area <sup>1</sup> (m <sup>2</sup> )		Speed (r/min)	Maximum power (W)	Power supply	Sound pressure level at 50% of max speed. <sup>2</sup> (dB (A))	Maximum flow rate (m <sup>3</sup> /h)		Approx. weight (Kg)
	Filters (F7+F9)	Filters (F7+H14)					Filters (F7+F9)	Filters (F7+H14)	
CJK/FILTER/EC-220	50	-	3265	176	200-240V 50/60Hz 1Ph	48	420	-	32
CJK/FILTER/EC-250	60	-	2850	180	200-240V 50/60Hz 1Ph	49	500	-	33
CJK/FILTER/EC-310	65	55	1920	175	200-240V 50/60Hz 1Ph	47	550	450	34
CJK/FILTER/EC-400	190	155	1550	460	200-240V 50/60Hz 1Ph	47	1600	1300	68
CJK/FILTER/EC-500	270	230	1250	1150	380-480V 50/60Hz 3Ph	51	2250	1950	118

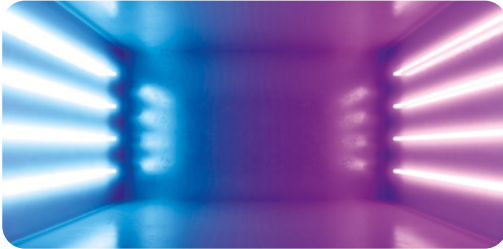
<sup>1</sup>Recommended effective working area with a 3-meter-high premises.

<sup>2</sup> Irradiated sound pressure level in dB(A) at a distance of 3 m.



## Technical characteristics of the UVC germicidal chamber

According to the model, these purification units can integrate a germicidal chamber, built with UVC ultraviolet lamps in a 256 nm spectrum, a wave width indicated to inactivate a wide variety of microorganisms by absorbing short wavelength energy through DNA and RNA.



Model	Number of lamps	Total electrical power (W)	Total Uvc radiation power (W)	Radiation dose (mJ/cm <sup>2</sup> )*
CJK/FILTER/EC-220	6	54	16.8	7.2
CJK/FILTER/EC-250	6	54	16.8	6.0
CJK/FILTER/EC-310	6	54	16.8	6.7
CJK/FILTER/EC-400	4	102	28	5.4
CJK/FILTER/EC-500	6	153	42	7.0

\*Minimum dose calculated based on the maximum flow rate.



## Erp. (Energy Related Products)

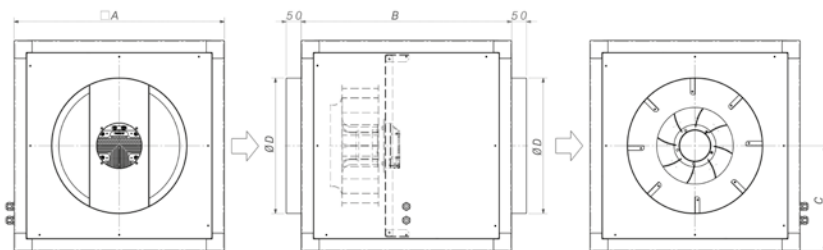
Information on Directive 2009/125/EC can be downloaded from the SODECA website or the QuickFan selector programme.

## Acoustic characteristics

Sound power spectrum Lw(A) in dB(A) per Hz frequency band  
Irradiated values at maximum speed and medium flow rate.

	63	125	250	500	1000	2000	4000	8000
CJK/FILTER/EC-220	63	65	63	58	55	51	45	35
CJK/FILTER/EC-250	64	66	64	59	56	52	46	36
CJK/FILTER/EC-310	62	64	62	57	54	50	44	34
CJK/FILTER/EC-400	66	61	56	53	54	49	43	32
CJK/FILTER/EC-500	69	65	60	61	61	58	59	54

## Dimensions mm



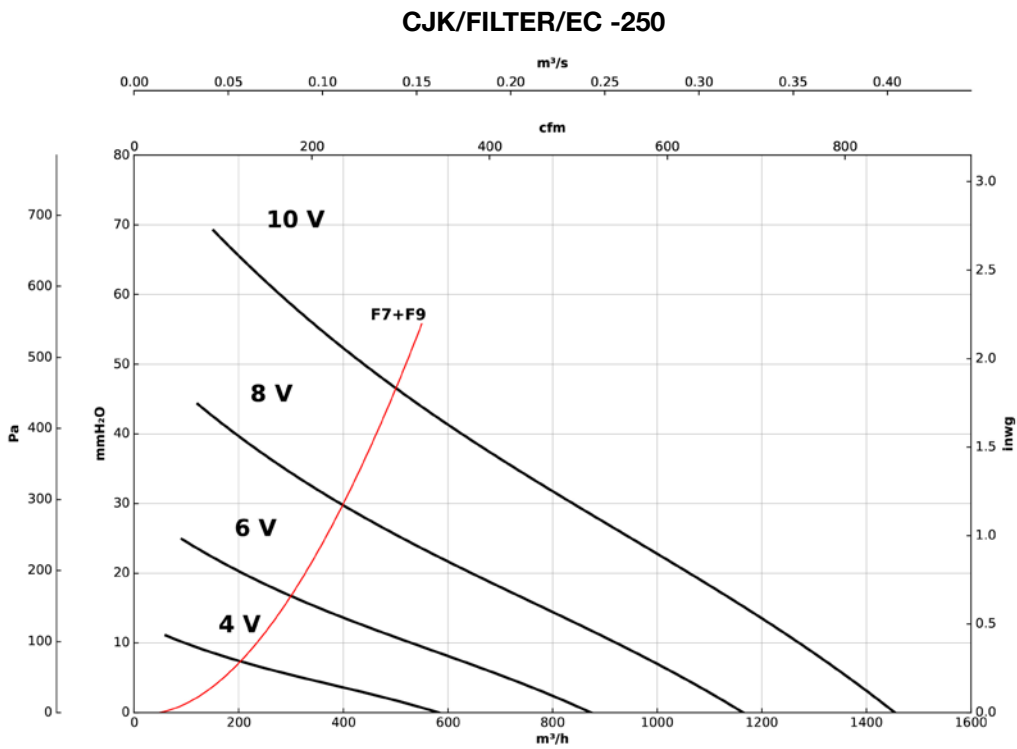
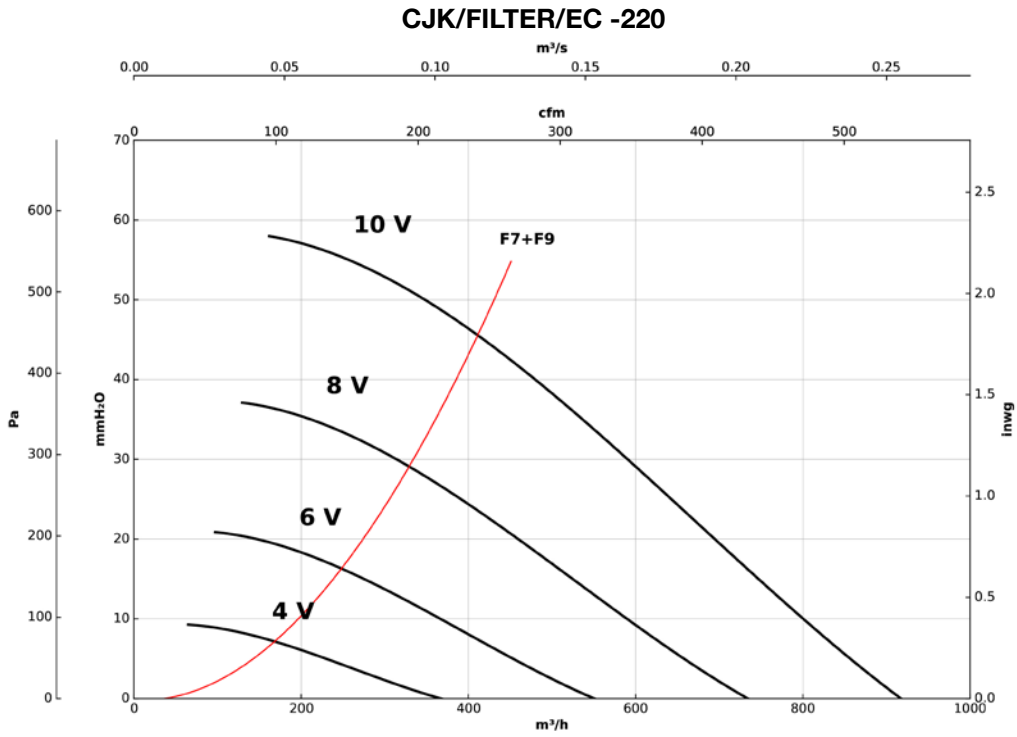
	A	B	C	ØD
CJK/FILTER/EC-220	500	500	250	315
CJK/FILTER/EC-250	500	500	250	355
CJK/FILTER/EC-310	500	500	250	355
CJK/FILTER/EC-400	700	700	350	450
CJK/FILTER/EC-500	900	900	450	500

## Accessories



**Characteristic curves**

Q= Flow rate in m<sup>3</sup>/h, m<sup>3</sup>/s and cfm      Pe= Static pressure in mm H<sub>2</sub>O, Pa and inwg

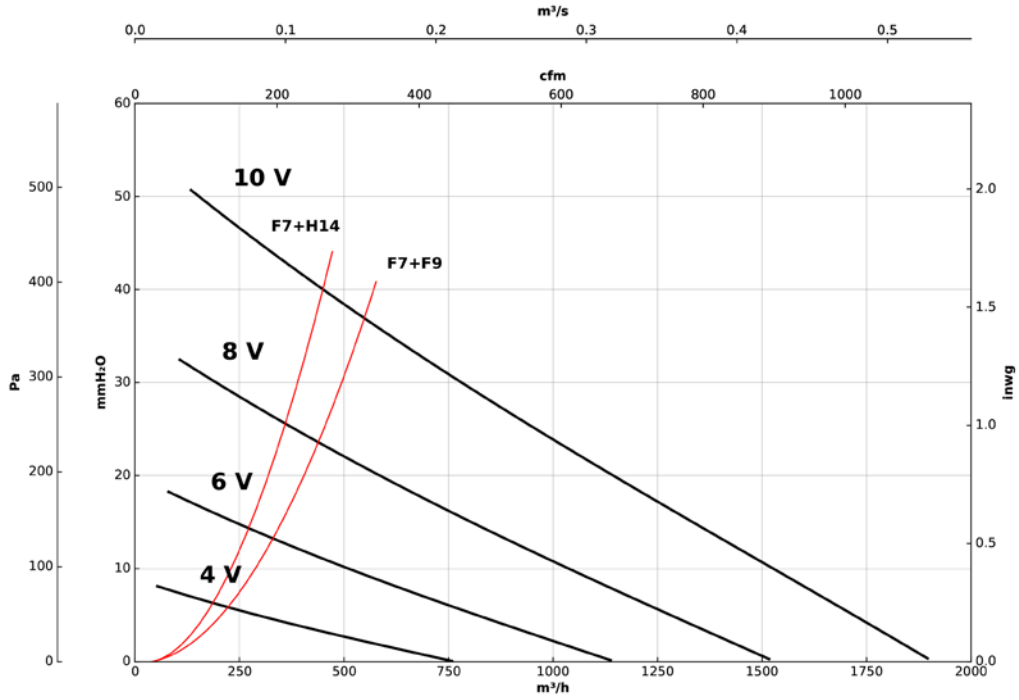


### Characteristic curves

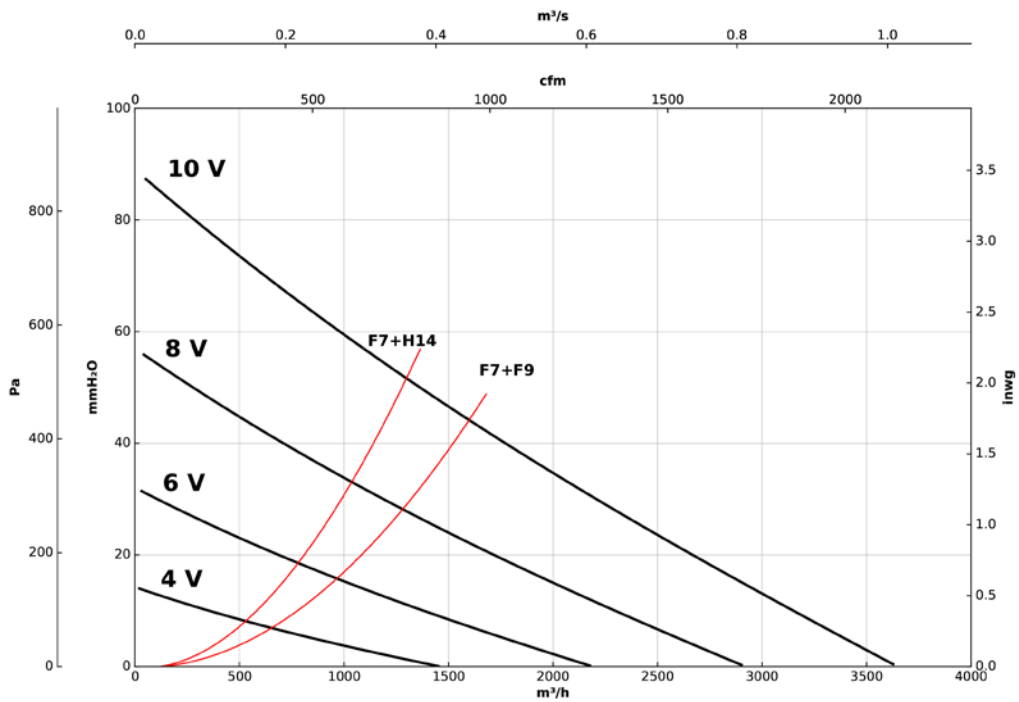
Q= Flow rate in m<sup>3</sup>/h, m<sup>3</sup>/s and cfm

Pe= Static pressure in mm H<sub>2</sub>O, Pa and inwg

#### CJK/FILTER/EC -310



#### CJK/FILTER/EC -400

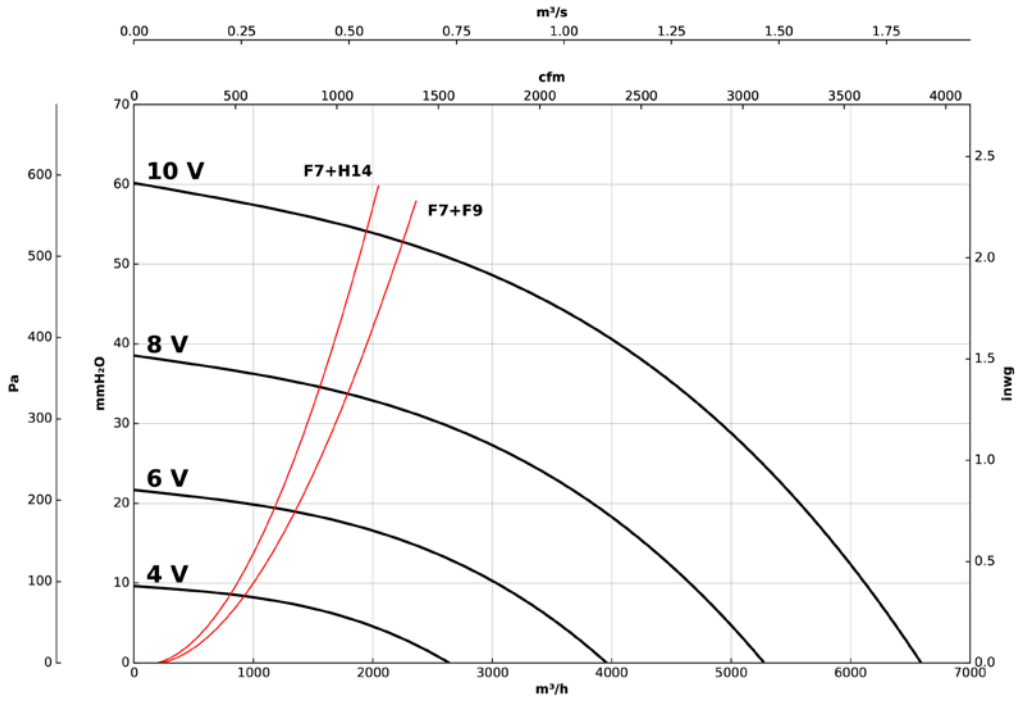


### Characteristic curves

Q= Flow rate in m<sup>3</sup>/h, m<sup>3</sup>/s and cfm

Pe= Static pressure in mm H<sub>2</sub>O, Pa and inwg

### CJK/FILTER/EC -500







## HEADQUARTER

### Sodeca, S.L.U.

Pol. Ind. La Barricona  
Carrer del Metall, 2  
E-17500 Ripoll  
Girona, SPAIN  
Tel. +34 93 852 91 11  
Fax: +34 93 852 90 42  
General sales: comercial@sodeca.com  
Export sales: ventilation@sodeca.com

## PRODUCTION PLANT

### Sodeca, S.L.U.

Ctra. de Berga, km 0,7  
E-08580 Sant Quirze de Besora  
Barcelona, SPAIN  
Tel. +34 93 852 91 11  
Fax: +34 93 852 90 42  
General sales: comercial@sodeca.com  
Export sales: ventilation@sodeca.com



## EUROPE

### FINLAND

#### Sodeca Finland, Oy HUITTINEN

Sales and Warehouse  
Mr. Kai Yli-Sipilä  
Metsälännankatu 26  
FI-32700 Huitinen  
Tel. + 358 400 320 125  
orders.finland@sodeca.com

#### HELSINKI

Smoke Control Solutions  
Mr. Antti Kontkanen  
Vilppulantie 9C  
FI-00700 Helsinki  
Tel. +358 400 237 434  
akontkanen@sodeca.com

#### HYVINKÄÄ

Industrial Applications  
Mr. Jaakko Tomperi  
Niinistökatu 12  
FI-05800 Hyvinkää  
Tel. +358 451 651 333  
jtomperi@sodeca.com

### ITALIA

#### Marelli Ventilazione, S.R.L.

Viale del Lavoro, 28  
37036 San Martino B.A.  
(VR), ITALY  
Tel. +39 045 87 80 140  
vendite@sodeca.com

### PORTUGAL

#### Sodeca Portugal, Unip. Lda.

PORTO  
Rua Veloso Salgado  
1120/1138  
4450-801 Leça de Palmeira  
Tel. +351 229 991 100  
geral@sodeca.pt

#### LISBOA

Pq. Emp. da Granja Pav. 29  
2625-607 Vialonga  
Tel. +351 219 748 491  
geral@sodeca.pt

#### ALGARVE

Rua da Alegria, 33  
8200-569 Ferreiras  
Tel. +351 289 092 586  
geral@sodeca.pt

### UNITED KINGDOM

#### Sodeca Fans UK, Ltd.

Mr. Mark Newcombe  
Tamworth Enterprise Centre  
Philip Dix House, Corporation  
Street, Tamworth, B79 7DN  
UNITED KINGDOM  
Tel. +44 (0) 1827 216 109  
sales@sodeca.co.uk

## AMERICA

### CHILE

#### Sodeca Ventiladores, SpA.

Sra. Sofía Ormazábal  
Santa Bernardita 12.005  
(Esquina con Puerta Sur)  
Bodegas 24 a 26,  
San Bernardo, Santiago,  
CHILE  
Tel. +56 22 840 5582  
ventas.chile@sodeca.com

### COLOMBIA

#### Sodeca Latam, S.A.S.

Sra. Luisa Stella Prieto  
Calle7 No. 13 A-44  
Manzana 4 Lote1, Montana  
Mosquera, Cundinamarca  
Bogotá, COLOMBIA  
Tel. +57 1 756 4213  
ventascolombia@sodeca.co

### PERU

#### Sodeca Perú, S.A.C.

Sr. Jose Luis Jiménez  
C/ Mariscal Jose Luis de  
Orbegoso 331. Urb. El pino.  
15022, San Luis. Lima, PERÚ  
Tel. +51 1 326 24 24  
Cel. +51 994671594  
comercial@sodeca.pe

## RUSSIA

### RUSSIA

#### Sodeca, L.L.C.

Mr. Stanislav Alifanov  
Severnoye Shosse, 10 room 201  
Business Park Plaza Ramstars  
140105 Ramenskoye,  
Moscow region, RUSSIA  
Tel. +7 495 955 90 50  
alifanov@sodeca.com



[www.sodeca.com](http://www.sodeca.com)

